



Occupational safety and partition walls

Protection Curtains And Walls

Welding Protection Curtain	175
Welding strip curtains	179
Welding protection strips	183
Protection Curtains And Walls	187
Mounting systems	189
Pivoting Arm For Welding Curtains	197
Swivel Arm Wall Mounted, Lockable And Telescopic	198
Mobile protection screens with curtains	200
Mobile protection screens with welding strip curtains	202
Welding protection screen with strips	203

Sound insulating partitioning wall systems

Booth	205
Sound insulating partitioning wall systems	206
Grinding booth with roof	210
Mobile soundproof wall	211

Welding protective blankets

Welding protective blankets	212
-----------------------------	-----



Welding curtains

For the separation of work and hall areas

KEMPER welding protection curtains are of the highest quality and are ideally suited to separating work areas and shielding welding workplaces. The UV and infrared rays generated during the welding process are dangerous for employees in the immediate vicinity. The curtains not only protect against these dangerous rays, but also against welding spatter and glowing sparks.

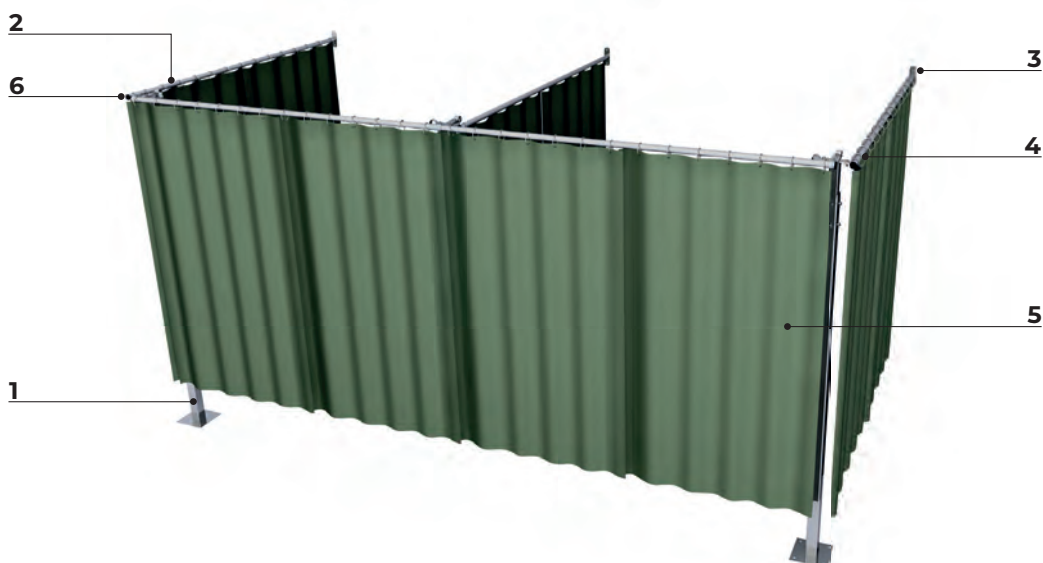
All protective curtains are seamed all around and are suitable for mounting on a C-profile or a tube. The reinforced ring eyelets included in the scope of delivery ensure a stable suspension and allow the curtain to be moved sideways. All curtains are available in different colours and sizes - special sizes are also possible.

Metal hook suspended welding curtains for 1" pipe

Example

Of a welding curtain system W 4.000 x D 2.000 x H 2.000 mm with welding curtain S9, dark green, matt, ground clearance 200 mm:

1. 3 x column for 1" pipe Part No. 70 180 110
2. 2 x 6 m 1" pipe, Part No. 70 190 144
3. 3 x wall mounting plate for 1" pipe, Part No. 70 190 135
4. 7 x sets of metal hooks for 1" pipe, (70 pieces), Part No. 70 120 109
5. 10 x welding curtains S9, dark green, matt, H 1.800 x W 1.300 mm, Part No. 70 100 101
6. 5 x end caps for 1" pipe, Part No. 70 190 133





Sliding hook suspended welding curtains for C-profile

Example

Of a welding curtain system W 4.000 x D 2.000 x H 2.000 mm with welding curtain S9, dark green, matt, ground clearance 200 mm:

1. 3 x column for C-profile, Part No. 70 180 109
2. 2 x 6 m C-Profil, Part No. 70 124 106
3. 3 x wall mounting plate for C-profile, Part No. 70 190 113
4. 5 x end caps for C-profile, Part No. 70 120 107
5. 7 x sets of metal hooks (70 pieces), Part No. 70 120 112
6. 10 x welding curtains S9, dark green, matt, H 1.800 x W 1.300 mm, Part No. 70 100 101



Welding curtains



Applications

- For separating individual work and factory areas
- Protection against dangerous radiation from welding arcs and splashes
- visual protection
- Light dimming

Properties

- For fixing on a tube or a C-profile
- Reinforced hems on all sides to prevent tearing
- Safety curtain in colour S0, clear is self-extinguishing, class K 1, as per DIN 53 438, part 2
- Welding curtain is tested as per DIN EN ISO 25980
- Reinforced eyelets for fixing
- Sealed-in plastic snap fasteners

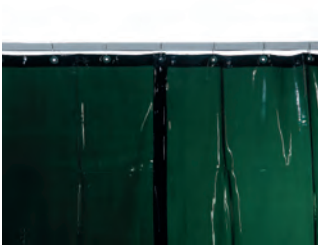
Benefits

- Rugged suspension system due to reinforced eyelets and tear-proof hem
- Curtain can be moved aside due to fastening using eyelets or sliding hooks
- Curtain size can be varied by use of snap fasteners



Welding Curtain S9, Dark Green

Art. No.	Description
70 100 100	H 1,600 x W 1,300 mm, 1.30 kg, thickness = 0,4 mm
70 100 101	H 1,800 x W 1,300 mm, 1.50 kg, thickness = 0,4 mm
70 100 102	H 2,000 x W 1,300 mm, 1.60 kg, thickness = 0,4 mm
70 100 103	H 2,200 x W 1,300 mm, 1.70 kg, thickness = 0,4 mm
70 100 104	H 2,400 x W 1,300 mm, 1.90 kg, thickness = 0,4 mm
70 100 105	H 2,600 x W 1,300 mm, 2.00 kg, thickness = 0,4 mm
70 100 106	H 2,800 x W 1,300 mm, 2.20 kg, thickness = 0,4 mm
70 100 107	H 3,000 x W 1,300 mm, 2.30 kg, thickness = 0,4 mm
70 100 121	custom size per m ²



Welding Protection Curtain S7, Green

Art. No.	Description
70 100 300	H 1,600 x W 1,300 mm, 1.30 kg, thickness = 0,4 mm
70 100 301	H 1,800 x W 1,300 mm, 1.50 kg, thickness = 0,4 mm
70 100 302	H 2,000 x W 1,300 mm, 1.60 kg, thickness = 0,4 mm
70 100 303	H 2,200 x W 1,300 mm, 1.70 kg, thickness = 0,4 mm
70 100 304	H 2,400 x W 1,300 mm, 1.90 kg, thickness = 0,4 mm
70 100 305	H 2,600 x W 1,300 mm, 2.00 kg, thickness = 0,4 mm
70 100 306	H 2,800 x W 1,300 mm, 2.20 kg, thickness = 0,4 mm
70 100 307	H 3,000 x W 1,300 mm, 2.30 kg, thickness = 0,4 mm
70 100 321	custom size per m ²



Welding Protection Curtain, Red

Art. No.	Description
70 100 400	H 1,600 x W 1,300 mm, 1.30 kg, thickness = 0,4 mm
70 100 401	H 1,800 x W 1,300 mm, 1.50 kg, thickness = 0,4 mm
70 100 402	H 2,000 x W 1,300 mm, 1.60 kg, thickness = 0,4 mm
70 100 403	H 2,200 x W 1,300 mm, 1.70 kg, thickness = 0,4 mm
70 100 404	H 2,400 x W 1,300 mm, 1.90 kg, thickness = 0,4 mm
70 100 405	H 2,600 x W 1,300 mm, 2.00 kg, thickness = 0,4 mm
70 100 406	H 2,800 x W 1,300 mm, 2.20 kg, thickness = 0,4 mm
70 100 407	H 3,000 x W 1,300 mm, 2.30 kg, thickness = 0,4 mm
70 100 421	custom size per m ²



Protection Curtain S0, Clear

Transparent protection curtain protects against dust, draft, moisture and grinding sparks.

Art. No.	Description
70 100 500	H 1,600 x W 1,300 mm, 1.30 kg, thickness = 0,4 mm
70 100 501	H 1,800 x W 1,300 mm, 1.50 kg, thickness = 0,4 mm
70 100 502	H 2,000 x W 1,300 mm, 1.60 kg, thickness = 0,4 mm
70 100 503	H 2,200 x W 1,300 mm, 1.70 kg, thickness = 0,4 mm
70 100 504	H 2,400 x W 1,300 mm, 1.90 kg, thickness = 0,4 mm
70 100 505	H 2,600 x W 1,300 mm, 2.00 kg, thickness = 0,4 mm
70 100 506	H 2,800 x W 1,300 mm, 2.20 kg, thickness = 0,4 mm
70 100 507	H 3,000 x W 1,300 mm, 2.30 kg, thickness = 0,4 mm
70 100 521	custom size per m ²

Welding lamella curtains

For shielding of welding workplaces

KEMPER welding strip curtains come in the highest quality and are ideal for the spatial delimitation of work areas and for shielding welding workstations. They comply with DIN EN ISO 25980 and are flame-retardant according to DIN 53 438 T2. The curtains protect against the dangerous radiation produced during welding as well as against welding spatter and glowing sparks.

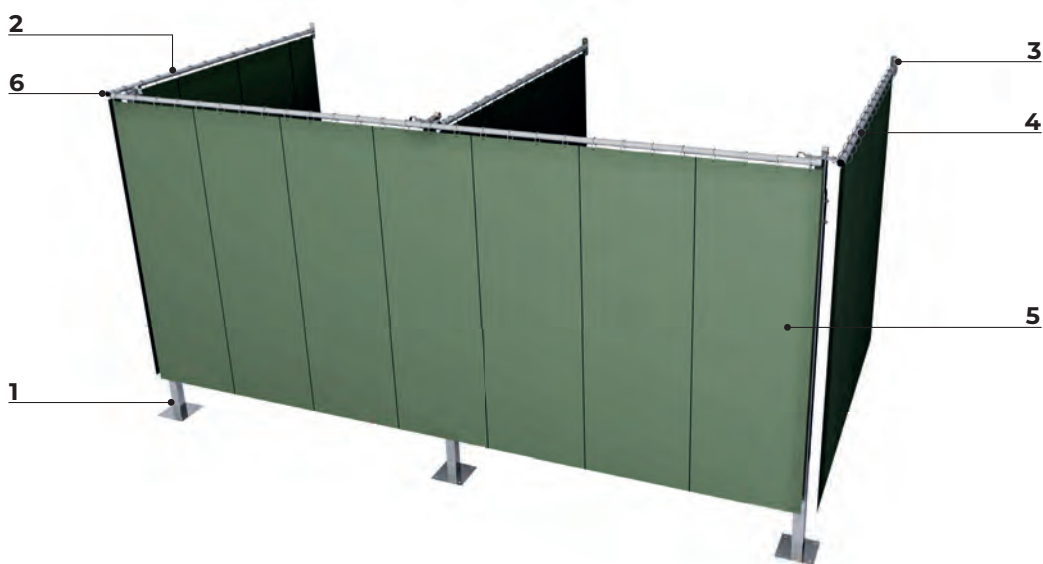
The curtains can be moved sideways due to their attachment to a C-profile / tube by means of ring eyes or hook sliders. The reinforced ring eyelets ensure a stable and safe suspension. All curtains are available in different colours and sizes - special sizes are also possible.

Metal hook suspended welding curtains for 1" pipe

Example

Of a welding curtain system W 4.000 x D 2.000 x H 2.000 mm with welding strip curtain S9, dark green, matt, ground clearance 200 mm:

1. 3 x column for 1" pipe Part No. 70 180 110
2. 2 x 6 m 1" pipe, Part No. 70 190 144
3. 3 x wall mounting plate for 1" pipe, Part No. 70 190 135
4. 7 x sets of metal hooks for 1" pipe, (70 pieces), Part No. 70 120 109
5. 20 x welding curtains S9, dark green, matt, H 1.800 x W 1.300 mm, Part No. 70 100 101
6. 5 x end caps for 1" pipe, Part No. 70 190 133





Sliding hook suspended welding curtains for C-profile

Example

Of a welding curtain system W 4.000 x D 2.000 x H 2.000 mm with welding strip curtain S9, dark green, matt, ground clearance 200 mm:

1. 3 x column for C-profile, Part No. 70 180 109
2. 2 x 6 m C-Profil, Part No. 70 124 106
3. 3 x wall mounting plate for C-profile, Part No. 70 190 113
4. 5 x end caps for C-profile, Part No. 70 120 107
5. 7 x sets of metal hooks (70 pieces), Part No. 70 120 112
6. 20 x welding curtains S9, dark green, matt, H 1.800 x W 1.300 mm, Part No. 70 100 101



Welding strip curtains



Applications

- For separating individual work and factory areas
- Protection against dangerous radiation from welding arcs and splashes
- visual protection
- Light dimming

Properties

- For fixing on a tube or a C-profile
- Reinforced eyelets for fixing
- Safety panel curtain in colour S0, clear is self-extinguishing, class K 1, as per DIN 53 438, part 2
- Welding panel curtain is tested as per DIN EN ISO 25980

Benefits

- Curtain can be moved aside due to fastening using eyelets or sliding hooks
- Rugged suspension system due to reinforced eyelets



Welding Strip Curtain S9, Dark Green

Art. No.	Description
70 250 100	H 1,600 x W 570 mm, thickness = 1,0 mm
70 250 101	H 1,800 x W 570 mm, thickness = 1,0 mm
70 250 102	H 2,000 x W 570 mm, thickness = 1,0 mm
70 250 103	H 2,200 x W 570 mm, thickness = 1,0 mm
70 250 104	H 2,400 x W 570 mm, thickness = 1,0 mm
70 250 105	H 2,600 x W 570 mm, thickness = 1,0 mm
70 250 106	H 2,800 x W 570 mm, thickness = 1,0 mm



Welding Strip Curtain, Red

Art. No.	Description
70 250 400	H 1,600 x W 570 mm, thickness = 1,0 mm
70 250 401	H 1,800 x W 570 mm, thickness = 1,0 mm
70 250 402	H 2,000 x W 570 mm, thickness = 1,0 mm
70 250 403	H 2,200 x W 570 mm, thickness = 1,0 mm
70 250 404	H 2,400 x W 570 mm, thickness = 1,0 mm
70 250 405	H 2,600 x W 570 mm, thickness = 1,0 mm
70 250 406	H 2,800 x W 570 mm, D 1 mm



Welding Strip Curtain S0, Clear

Transparent protection curtain protects against dust, draft, moisture and grinding sparks.

Art. No.	Description
70 250 500	H 1,600 x W 570 mm, thickness = 1,0 mm
70 250 501	H 1,800 x W 570 mm, thickness = 1,0 mm
70 250 502	H 2,000 x W 570 mm, thickness = 1,0 mm
70 250 503	H 2,200 x W 570 mm, thickness = 1,0 mm
70 250 504	H 2,400 x W 570 mm, thickness = 1,0 mm
70 250 505	H 2,600 x W 570 mm, thickness = 1,0 mm
70 250 506	H 2,800 x W 570 mm, thickness = 1,0 mm

Welding protection strips

For the spatial delimitation of work areas

KEMPER welding strips come in the highest quality and are ideal for separating work areas and shielding welding workplaces. They comply with DIN EN ISO 25980, are flame-retardant according to DIN 53 438 T2 and protect against the dangerous rays produced during welding as well as against weld spatter and glowing sparks.

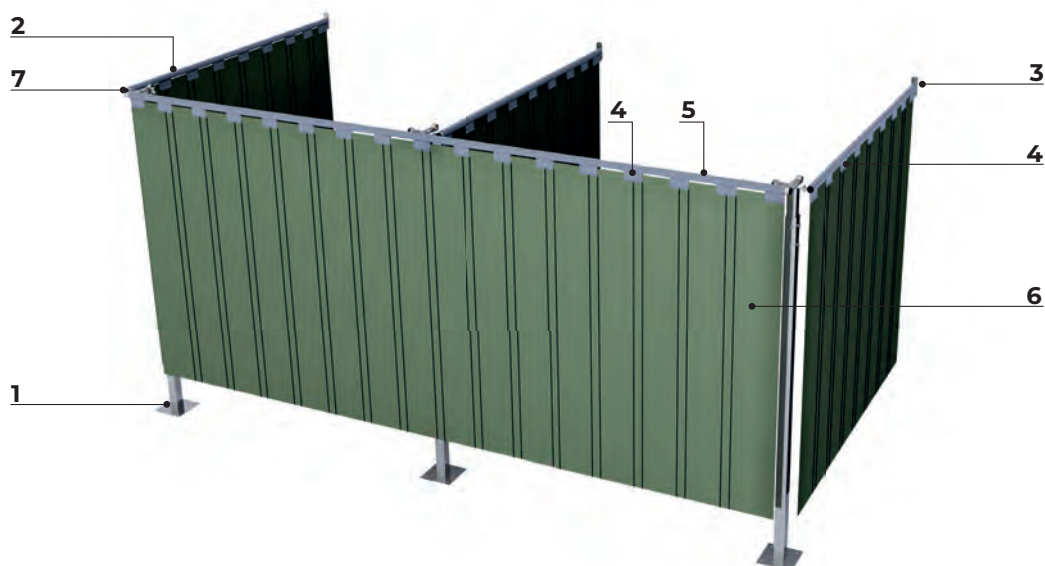
The strips are cut and punched according to the desired overlap (33%, 66% or 100%) and are simply installed with folding KEMPER suspension clips. The installation is either fixed or laterally adjustable. These are metre materials in various colours and different material thicknesses.

Welding protection strips

Example

Of a welding curtain system W 4.000 x D 2.000 x H 2.000 mm with welding strip curtain S9, dark green, matt, ground clearance 200 mm:

1. 3 x column for 1" pipe Part No. 70 180 110
2. 2 x 6 m 1" pipe, Part No. 70 190 144
3. 3 x wall mounting plate for 1" pipe, Part No. 70 190 135
4. 45 x pendular strip suspension clip, Part No. 70 190 127
5. 110 x spacer for 1" pipe, Part No. 70 190 129
6. 80 m welding protection strip S9, dark green, matt, Part No. 70 209 032
7. 5 x end cap for 1" pipe Part No. 70 190 133
40 x cutting and punching



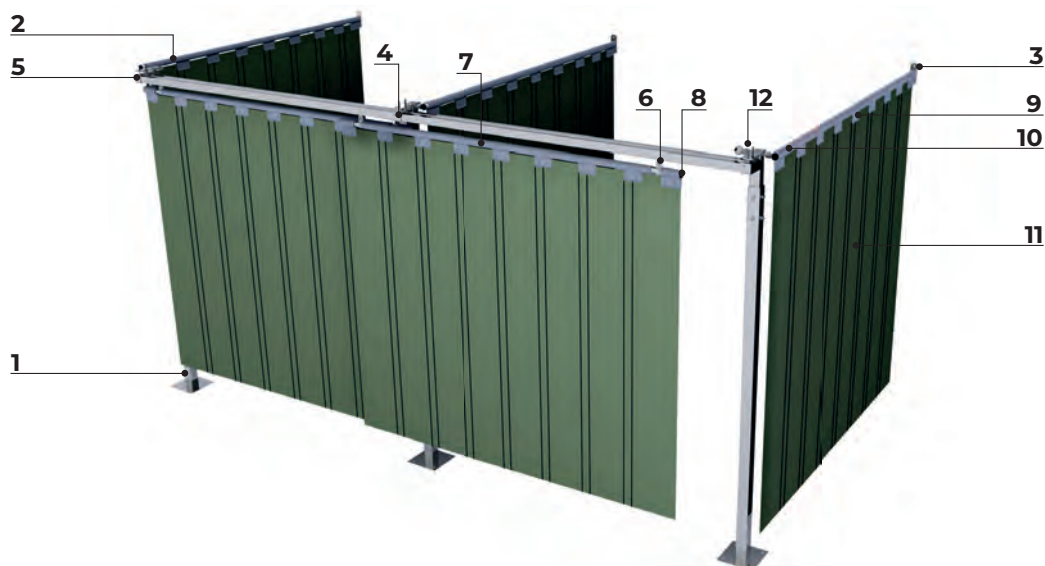


Lateral sliding welding protection strips

Example

of a lateral sliding welding protection strip system W 4,000 x D 2,000 x H 2,000 mm with welding protection strips S9, dark green, matt, ground clearance 200 mm:

1. 3 x column for 1" pipe, Part No. 70 180 110
2. 1 x 6 m 1" pipe, Part No. 70 190 144
3. 3 x wall mounting plate for 1" pipe, Part No. 70 190 135
4. 2 x 6 m C-profile, Part No. 70 124 106
5. 4 x end cap for C-profile, Part No. 70 120 107
6. 4 x travelling device for 1" pipe, Part No. 70 190 148
7. 1 x 6 m 1" pipe, Part No. 70 190 144
8. 4 x end cap for 1" pipe, Part No. 70 190 133
9. 45 x pendular strip suspension clip, Part No. 70 190 127
10. 110 x spacer for 1" pipe, Part No. 70 190 129
11. 80 m welding protection strip S9, dark green, matt, Part No. 70 209 032
12. 6 x universal rail fixing device for C-profile Part No. 70 190 112, 40 x cutting and punching



Welding protection strips



Applications

- For separating individual work and factory areas
- Protection against dangerous radiation from welding arcs and splashes
- visual protection
- Light dimming

Properties

- Safety panels in colour S0, clear are self-extinguishing, class K 1, as per DIN 53 438, part 2
- Welder protection panel is tested as per DIN EN ISO 25980
- Suspension by means of suspension brackets or pipe clamps on a tube or C-profile
- Strip overlap of 33%, 66% or 100%
- Can be installed in fixed position or laterally movable

Benefits

- Individual protection configuration by selecting degree of overlap
- Can be moved aside due to being attached to C-profile
- Passages can be created at several points in the partition since the individual elements in combination with a C-profile can be pushed aside in both directions
- Installation made easier and time is saved when mounted on folding KEMPER suspension brackets



Cutting and punching of welding protection strips

Art. No.	Description
70 210 033	Cutting and punching for clips and an overlap of 33 %
70 210 066	Cutting and punching for clips and an overlap of 66 %
70 210 100	Cutting and punching for clips and an overlap of 100 %
70 211 033	Cutting and punching for pipe clamps and an overlap of 33 %
70 211 066	Cutting and punching for pipe clamps and an overlap of 66 %
70 211 100	Cutting and punching for pipe clamps and an overlap of 100 %
70 210 000	Cutting of welding protection strips



Welding protection strip S9, dark green, matt

Per metre - maximum length 50m per roll

Art. No.	Description
70 209 032	300 x 2 mm, per metre, 0.80 kg/m
70 209 033	300 x 3 mm, per metre, 1.20 kg/m

Colour may vary slightly depending on light source.



Welding Protection Strip S7, Green

Per metre - maximum length 50m per roll

Art. No.	Description
70 204 032	300 x 2 mm, per metre, 0.80 kg/m
70 204 033	300 x 3 mm, per metre, 1.20 kg/m

Colour may vary slightly depending on light source.



Welding Protection Strip, Red

Per metre - maximum length 50m per roll

Art. No.	Description
70 202 032	300 x 2 mm, per metre, 0.80 kg/m
70 202 033	300 x 3 mm, per metre, 1.20 kg/m

Colour may vary slightly depending on light source.



Welding Protection Strip, Bronze

Per metre - maximum length 50m per roll

Art. No.	Description
70 203 032	300 x 2 mm, per metre, 0.80 kg/m
70 203 033	300 x 3 mm, per metre, 1.20 kg/m

Colour may vary slightly depending on light source.



Protection Strip S0, Clear

Per metre - maximum length 50m per roll

Art. No.	Description
70 201 032	300 x 2 mm, per metre, 0.80 kg/m
70 201 033	300 x 3 mm, per metre, 1.20 kg/m
70 201 044	400 x 4 mm, per metre, 2.00 kg/m
70 201 035	300 x 5 mm, per metre, 1.90 kg/m

Pivoting Self Retracting Cable Reel



Applications

- For setting up a welding protection curtain up to a width of 8.0 m
- visual protection
- Separating individual work and factory areas

Properties

- Pivoting if no curtain is stretched in place
- Consisting of a wire rope, a reel and bracket

Order Data

Art. No.	Description
70 110 101	Pivoting self retracting cable reel for curtains, 13.00 kg

Benefits

- Space-saving because curtain and wire rope reel can be easily folded aside
- Quickly ready for use since only the wire rope is tensed to position the curtain
- Totally adaptable to your needs, since the preferred hanging height and the height of the curtains can be chosen as desired

KEMPER Pendular clip (Hinged)



The big disadvantage of common strip suspensions and spacers are that they can only be mounted to the rail before erection.

After this, every single strip needs to be mounted to the strip suspensions with nuts and bolts, which is a complicated and time consuming procedure.

The folding KEMPER suspension clip offers a much easier and time saving installation.

The clips are delivered open and after finishing the installation of the rail system the suspension clip can simply be folded around the rail.

Subsequent to this, every single strip can easily be inserted into the suspension clip and held in place by special retaining rivets. The spacers work on the same principle.

Order Data

Art. No.	Description
70 190 127	Pendular clip for a 1" pipe including fixture nuts and bolts, plastic, 0.08 kg (to be ordered in batches of 5)
70 190 129	Spacer for 1" pipe, plastic, 0.02 kg, (to be ordered in batches of 10)

KEMPER:

cool,

clever,

clean.



1" pipe

Material thickness 3,25 mm, galvanised

Art. No.	Description
70 190 145	1" pipe, length 3 m, 7,50 kg
70 190 144	1" pipe, length 6 m, 15,00 kg



End cap for 1" pipe

Made out of plastic

Art. No.	Description
70 190 133	End cap for 1" pipe, plastic, 0,01 kg



Pipe clamp

Incl. nut and bolt

Art. No.	Description
70 190 132	Pipe clamp, galvanised, 0,10 kg



Metal hook for 1" pipe

To suspend welding curtains and welding strip curtains on a 1" pipe - galvanised, 7 metal hooks needed per curtain

Art. No.	Description
70 120 109	Metal hook for 1" pipe, 10 pieces / per set, 0,10 kg
70 120 110	Metal hook for 1" pipe, 13 pieces / per set, 0,13 kg
70 120 111	Metal hook for 1" pipe, 50 pieces / per set, 0,50 kg



Straight coupler for 1" pipe

Made of plastic, supplied with steel inlay

Art. No.	Description
70 190 147	Straight coupler for 1" pipe, plastic, 0,10 kg



Wall and ceiling fixture for 1" pipe

Art. No.	Description
70 190 123	Wall and ceiling fixture for 1" pipe, galvanised, 0,40 kg



Wall mounting fixture for 1" pipe

Art. No.	Description
70 190 135	Wall mounting fixture for 1" pipe, galvanised, 0,60 kg



Column for 1" pipe

Galvanised, incl. foot and pipe fixture

Art. No.	Description
70 180 110	Column for 1" pipe, adjustable height 2,000 up to 3,000 mm, 60 x 60 x 2.5 mm, with foot plate 200 x 200 mm, 14,00 kg



Ceiling fixture with lowering device for 1" pipe

Galvanised, lowering from 1,000 mm to 6,000 mm

Art. No.	Description
70 190 121	Ceiling fixture with lowering device for 1" pipe, galvanised, 3,00 kg



C-profile, 40 x 40 x 2.5 mm

Material thickness 2.5 mm, galvanised

Art. No.	Description
70 124 107	C-profile, 40 x 40 x 2.5 mm, length 3 m, 7.50 kg
70 124 106	C-profile, 40 x 40 x 2.5 mm, length 6 m, 15.00 kg



90°-elbow for C-profile

Galvanised, 40 x 40 x 2,5 mm

Art. No.	Description
70 124 102	90°-elbow for C-profile, radius 400 mm, 2.60 kg
70 124 103	90°-elbow for C-profile, radius 1,000 mm, 3.90 kg



Straight coupler for C-profile

Art. No.	Description
70 190 105	Straight coupler for C-profile, galvanised, 0.65 kg



T-coupler for C-profile

Art. No.	Description
70 190 107	T-coupler for C-profile, galvanised, 1.30 kg



Sliding hooks for C-profile

To suspend welding curtains and welding strip curtains on a C-profile - made of plastic, 7 sliding hooks needed per curtain

Art. No.	Description
70 120 112	Sliding hooks for C-profile, 10 pieces / per set, 0.10 kg
70 120 117	Sliding hooks for C-profile, 13 pieces / per set, 0.13 kg
70 120 113	Sliding hooks for C-profile, 50 pieces / per set, 0.50 kg



End cap for C-profile

Art. No.	Description
70 120 107	End cap for C-profile, Plastic, 0.01 kg



Ceiling fixture for C-profile

Art. No.	Description
70 190 108	Ceiling fixture for C-profile, galvanised, 0.40 kg



Ceiling fixture for double-C-profile

Art. No.	Description
70 190 110	Ceiling fixture for double-C-profile, galvanised, 0.80 kg



Wall fixture for C-profile

Art. No.	Description
70 190 113	Wall fixture for C-profile, galvanised, 1.30 kg



Wall fixture for double-C-profile

Art. No.	Description
70 190 138	Wall fixture for double-C-profile, galvanised, 1.90 kg



Side wall fixture for C-profile

Art. No.	Description
70 190 115	Side wall fixture for C-profile, galvanised, 0.68 kg



Side wall fixture for double-C-profile

Art. No.	Description
70 190 117	Side wall fixture for double-C-profile, galvanised, 1.30 kg



Limit stop for C-profile

With rubber bumper

Art. No.	Description
70 120 100	Limit stop for C-profile, galvanised, 0.10 kg



Ceiling fixture with lowering device for C-profile

Galvanised, lowering from 1.000 mm to 6.000 mm

Art. No.	Description
70 190 120	Ceiling fixture with lowering device for C-profile, galvanised, 3.00 kg



Universal rail fixing device for C-profile

Art. No. Description

70 190 112	Universal rail fixing device for C-profile, galvanised, 0.36 kg
------------	---



Carriage with 8 plastic rollers

Made of plastic

Art. No.	Description
70 120 118	Carriage with 8 plastic rollers and hooks to suspend welding strip curtains, plastic, 0.03 kg



Carriage with two ball bearing rollers

Made of metal

Art. No.	Description
70 190 148	Carriage with two ball bearing rollers and a pipe clamp suitable for a 1" pipe, metal, 0.22 kg



Carriage for C-Profile

Art. No.	Description
70 190 159	Carriage for C-Profile, with 2 ball bearing steel rollers and plastic hook to hang welding protection curtains from



Column for C-profile

Galvanised, incl. foot and C-profile fixture

Art. No.	Description
70 180 109	Column for C-profile, adjustable height 2,000 up to 3,000 mm, 60 x 60 x 2.5 mm, with foot plate 200 x 200 mm, 14.00 kg



Pendular clip for a 1" pipe including fixture nuts and bolts

Made of plastic (to be ordered in batches of 5)

Art. No.	Description
70 190 127	Pendular clip for a 1" pipe including fixture nuts and bolts, plastic, 0.08 kg (to be ordered in batches of 5)



Spacer for 1" pipe

Made of plastic (to be ordered in batches of 10)

Art. No.	Description
70 190 129	Spacer for 1" pipe, plastic, 0.02 kg (to be ordered in batches of 10)

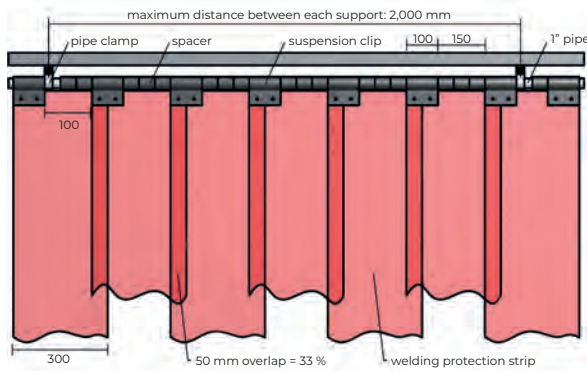


Pipe clamp for 1" pipe

Galvanised

Art. No.	Description
70 190 128	Pipe clamp for 1" pipe, galvanised, 0.20 kg

Overlap 33 %



Attention!

Fixed installation:

only wall and ceiling fixtures (no travelling devices)

Lateral sliding installation:

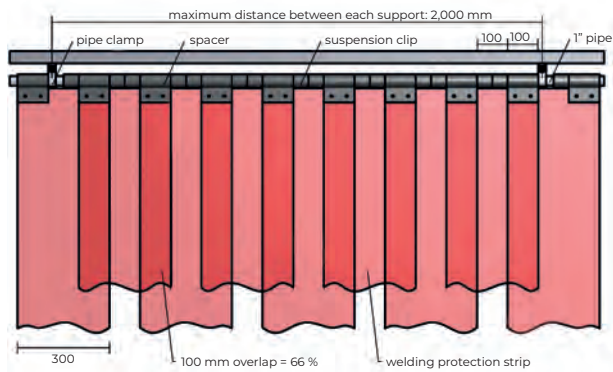
C-profile = double curtain width

Wall and ceiling fixtures for C-profile = 2 x travelling devices

Material requirement

Curtain width and pipe length	mm	550	800	1.050	1.300	1.550	1.800	2.050	2.300	2.550	2.800	3.050	3.300	3.550	3.800	4.050	4.300	4.550	4.800	5.050	5.300	5.550	5.800	6.050	6.300	6.550	6.800	7.050	7.300	7.550	7.800
Welding strips	pieces	2	3	4	5	6	7	8	9	10	11	12	13	14	15	16	17	18	19	20	21	22	23	24	25	26	27	28	29	30	31
Suspension clips	pieces	3	4	5	6	7	8	9	10	11	12	13	14	15	16	17	18	19	20	21	22	23	24	25	26	27	28	29	30	31	32
Spacers pieces	pieces	3	6	9	12	15	18	21	23	26	29	32	35	38	41	43	46	49	52	55	58	61	64	66	69	72	75	78	81	84	87
Ceiling fixtures or travelling devices	pieces	2	2	2	2	2	2	2	3	3	3	3	3	3	3	4	4	4	4	4	4	4	4	5	5	5	5	5	5	5	5

Overlap 66 %



Attention!

Fixed installation:

only wall and ceiling fixtures (no travelling devices)

Lateral sliding installation:

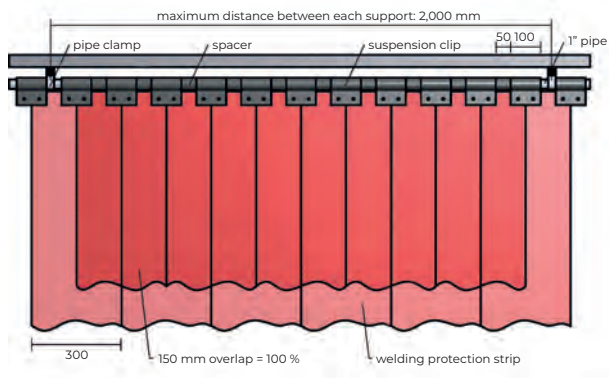
C-profile = double curtain width

Wall and ceiling fixtures for C-profile = 2 x travelling devices

Material requirement

Curtain width and pipe length	mm	500	700	900	1.100	1.300	1.500	1.700	1.900	2.100	2.300	2.500	2.700	2.900	3.100	3.300	3.500	3.700	3.900	4.100	4.300	4.500	4.700	4.900	5.100	5.300	5.500	5.700	5.900	6.100	6.300
Welding strips	pieces	2	3	4	5	6	7	8	9	10	11	12	13	14	15	16	17	18	19	20	21	22	23	24	25	26	27	28	29	30	31
Suspension clips	pieces	3	4	5	6	7	8	9	10	11	12	13	14	15	16	17	18	19	20	21	22	23	24	25	26	27	28	29	30	31	32
Spacers pieces	pieces	2	4	6	8	10	12	14	16	17	19	21	23	25	27	29	31	33	35	36	38	40	42	44	46	48	50	52	54	55	57
Ceiling fixtures or travelling devices	pieces	2	2	2	2	2	2	2	2	3	3	3	3	3	3	3	3	3	3	4	4	4	4	4	4	4	4	4	4	5	5

Overlap 100 %



Attention!

Fixed installation:

only wall and ceiling fixtures (no travelling devices)

Lateral sliding installation:

C-profile = double curtain width

Wall and ceiling fixtures for C-profile = 2 x travelling devices

Material requirement

Curtain width and pipe length	mm	450	600	750	900	1.050	1.200	1.350	1.500	1.650	1.800	1.950	2.100	2.250	2.400	2.550	2.700	2.850	3.000	3.150	3.300	3.450	3.600	3.750	3.900	4.040	4.200	4.350	4.500	4.650	4.800
Welding strips	pieces	2	3	4	5	6	7	8	9	10	11	12	13	14	15	16	17	18	19	20	21	22	23	24	25	26	27	28	29	30	31
Suspension clips	pieces	4	5	6	7	8	9	10	11	12	13	14	15	16	17	18	19	20	21	22	23	24	25	26	27	28	29	30	31	32	33
Spacers pieces	pieces	1	2	3	4	5	6	7	8	9	10	11	11	12	13	14	15	16	17	18	19	20	21	22	23	23	24	25	26	27	28
Ceiling fixtures or travelling devices	pieces	2	2	2	2	2	2	2	2	2	2	2	3	3	3	3	3	3	3	3	3	3	3	3	3	4	4	4	4	4	4

Pivoting Arm For Welding Curtains

Applications

- For separating individual work and factory areas
- Protection against dangerous radiation from welding arcs and splashes

Benefits

- The partition can be slid into position due to the C-profile
- Space-saving because the pivoting arm can easily be folded aside
- Fast set-up of partition by simply unfolding the pivoting wall arm
- Totally adaptable to your needs, since the preferred boom height and the height of the curtains can be chosen as desired

Properties

- For curtain version: C-Profile for fitting
- For curtain and panel version: Pipe (1") for fitting
- C-profile for mounting
- Length from 2 m to 6 m
- For wall mounting
- Note: Additional guy wire is provided only for pivoting arms with length of 5 m and 6 m



Order details pivoting Arm

Art. No.	Description
70 700 250	Pivoting arm for welding curtains, wall-mounted, length 2,000 mm
70 700 251	Pivoting arm for welding curtains, wall-mounted, length 3,000 mm
70 700 252	Pivoting arm for welding curtains, wall-mounted, length 4,000 mm
70 700 253	Pivoting arm for welding curtains, wall-mounted, length 5,000 mm
70 700 254	Pivoting arm for welding curtains, wall-mounted, length 6,000 mm



Order details pivoting arm including column

Art. No.	Description
70 700 650	Pivoting arm for welding curtains, incl. column, length 2,000 mm, height at lower edge of extension arm: 2,165 mm
70 700 651	Pivoting arm for welding curtains, incl. column, length 3,000 mm, height at lower edge of extension arm: 2,165 mm
70 700 652	Pivoting arm for welding curtains, incl. column, length 4,000 mm, height at lower edge of extension arm: 2,165 mm
70 700 653	Pivoting arm for welding curtains, incl. column, length 5,000 mm, height at lower edge of extension arm: 2,215 mm
70 700 654	Pivoting arm for welding curtains, incl. column, length 6,000 mm, height at lower edge of extension arm: 2,215 mm

Swivel Arm Wall Mounted, Lockable And Telescopic



Order Data

Art. No.	Description
131 5570	Locking swivel arms with a telescopic facility for mounting on walls and pillars, 1,5 m
131 4874	Locking swivel arms with a telescopic facility for mounting on walls and pillars, 2 m

Applications

- For flexibly separating individual work and factory areas
- For protective welding curtains and strips
- Protection against dangerous radiation from welding arcs and splashes

Properties

- Can be locked into position
- Length 1.5 m and 2 m
- Telescopically extendable to 2 m and 3 m
- Tube (1") for attaching welding curtains
- Mounting on a pillar or on a wall using a wall bracket

Benefits

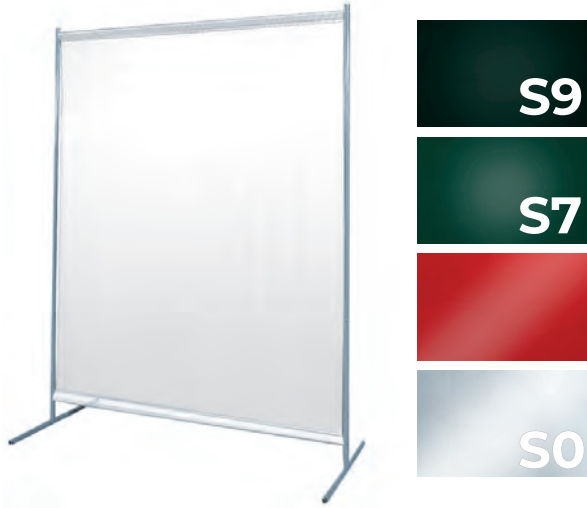
- Partition can be extended or pushed together flexibly due to telescoping facility
- Easy operation of the telescoping facility by means of a chain
- Increased safety for persons and equipment due to locking.
- Space-saving because the pivoting arm can easily be folded aside
- Fast set-up of partition by simply unfolding the pivoting wall arm

Variants

- Various arm lengths and telescopic lengths

**The essentials:
you and your weld.
We take care of
noise, radiation and
smoke.**

1-Panel Protective Screen With Curtain



Order Data

Art. No.	Description
70 600 301	1-panel mobile protective screen with welding curtain S9 dark green matt DIN EN ISO 25980
70 600 302	1-panel mobile protective screen with welding curtain S7 green DIN EN ISO 25980
70 600 304	1-panel mobile protective screen with welding curtain red DIN EN 1598
70 600 303	1-panel mobile protective screen with welding curtain S0 transparent

Basic data

Width	1450 mm
Height	1900 mm
Thickness	0,4 mm

Applications

- Protection against dangerous radiation from welding arcs and splashes

Properties

- Foil welding curtain fabric
- Colour S0, clear is self-extinguishing, class K 1, as per DIN 53 438, part 2
- Colour S7, S9 Dark Green and Red are DIN EN ISO 25980 certified
- Low weight
- Ground clearance 100 mm

Benefits

- Flexible application due to low weight
- Legally compliant protection since the welding curtain complies with DIN EN ISO 25980

Scope Of Supply

- Support frame
- Welding curtain
- Fixing material

Protection screen with curtains

Applications

- For separating individual work and factory areas
- Protection against dangerous radiation from welding arcs and splashes

Properties

- Sturdy frame made of rectangular tubing
- Colour S0, clear is self-extinguishing, class K 1, as per DIN 53 438, part 2
- Colour S7, S9 Dark Green and Red are DIN EN ISO 25980 certified
- Ground clearance 165 mm



Benefits

- Solid industrial quality due to stable square tube construction with powder coating
- Flexible application due to optional wheel kit

Scope Of Supply

- Support frame
- Welding curtain
- Metal hooks

Order details 1-panel protection screen

Art. No.	Description
70 600 500	S9, dark green, matt
70 600 503	S7, green, matt
70 600 501	red
70 600 502	Transparent, S0, against dust, draft
70 600 699	accessories: set of castors, consisting of four guide roller, two with brakes

Basic data

Width	2100 mm
Height	1830 mm
Thickness	0.4 mm

Order details 3-panel protection screen

Art. No.	Description
70 600 550	S9, dark green, matt
70 600 560	S7, green, mat
70 600 551	red
70 600 552	Transparent, S0, against dust, draft
70 600 699	accessories: set of castors, consisting of four guide roller, two with brakes

Basic data

Width	3800 mm
Height	1830 mm
Thickness	0.4 mm

Protection screen with protection strips

Applications

- For separating individual work and factory areas
- Protection against dangerous radiation from welding arcs and splashes

Properties

- Sturdy frame made of rectangular tubing
- Colour S0, clear is self-extinguishing, class K 1, as per DIN 53 438, part 2
- S9 dark green and red are DIN EN ISO 25980 tested
- Wheel kit (optional)
- Ground clearance 165 mm



Benefits

- Solid industrial quality due to stable square tube construction with powder coating
- Flexible application due to optional wheel kit

Scope Of Supply

- Support frame
- Strips
- Metal hooks

Order details 1-panel protection screen

Art. No.	Description
70 600 701	S9, dark green, matt
70 600 702	Red
70 600 703	S0, Transparent, against dust and draft
70 600 699	accessories: set of castors, consisting of four guide roller, two with brakes

Basic data

Width	2100 mm
Height	1830 mm
Thickness	1 mm



Order details 3-panel protection screen

Art. No.	Description
70 600 664	S9, dark green, matt
70 600 665	Red
70 600 699	accessories: set of castors, consisting of four guide roller, two with brakes

Basic data

Width	3800 mm
Height	1830 mm
Thickness	1 mm

Protection screen with strips

Applications

- For separating individual work and factory areas
- Protection against dangerous radiation from welding arcs and splashes

Properties

- Sturdy frame made of rectangular tubing
- Colour S0, clear is self-extinguishing, class K 1, as per DIN 53 438, part 2
- S9 dark green and red are DIN EN ISO 25980 tested



Benefits

- Solid industrial quality due to stable square tube construction with powder coating
- Flexible application due to optional wheel kit

Scope Of Supply

- Support frame
- Strips
- Suspension brackets
- Spacers

Order details 1-panel protection screen

Art. No.	Description
70 600 600	S9, dark green, matt, Thickness: 2mm
70 600 601	S9, dark green, matt, Thickness: 3mm
70 600 602	Red, Thickness: 2 mm
70 600 603	Red, Thickness: 3 mm
70 600 604	S0, Transparent, Thickness: 2mm
70 600 605	S0, Transparent, Thickness: 3mm
70 600 699	accessories: set of castors, consisting of four guide roller, two with brakes

Basic data

Width	2100 mm
Height	1830 mm



Order details 3-panel protection screen

Art. No.	Description
70 600 650	S9, dark green, matt, Thickness: 2mm
70 600 651	S9, dark green, matt, Thickness: 3mm
70 600 652	Red, Thickness: 2 mm
70 600 653	Red, Thickness: 3 mm
70 600 654	S0, Transparent, Thickness: 2mm
70 600 655	S0, Transparent, Thickness: 3mm
70 600 699	accessories: set of castors, consisting of four guide roller, two with brakes

Basic data

Width	3800 mm
Height	1830 mm



Booths

Using KEMPER soundproof partitioning systems, it is possible to erect fully enclosed booths within a manufacturing facility. The individual plates can be supplied either in a perforated sheet version, or, for improved sound insulation, from perforated sheet on the inside and solid sheet on the outside. Naturally we can assist you in planning the booths to meet your requirements.

The grinding booths are available in the following versions:

1. Enclosed booth with a double-hinged door

The roof of the booth consists of two segments. The double-hinged doors can be secured with a bolt and the door can be locked.



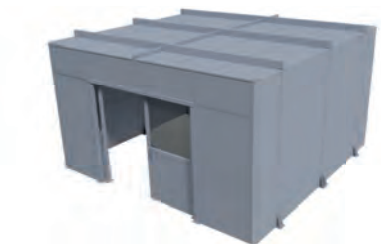
2. Enclosed booth with hinged door

The basis of the roof is a solid framework and next to the hinged door is a window with a pane of clear Perspex. The hinged door can be locked.



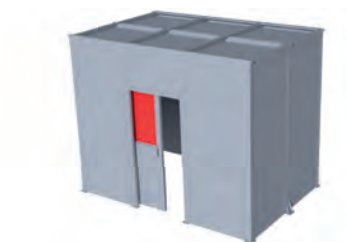
3. Enclosed booth with double sliding door

The roof of the booth consists of box elements and the entire cabin is mainly constructed from standard partitioning elements. The double sliding window is made of clear Perspex.



4. Enclosed booth with sliding door

The construction of this booth is based on standard components and a roof of frame segments. The sliding door features a red protective pane at the top.



Equipment for schools

KEMPER sound insulating and partitioning wall systems are also available for schools and training workshops.

Different versions of the booths allow students to be observed either through a window or through the entrance of the booth. The openings can be separated either through a fixed curtain system or one that can be pushed to one side.



Wall partitioning system

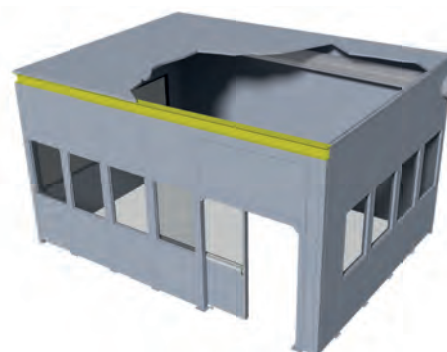
This example shows different possibilities of construction with modular elements.



Workshop partitioning

If you want a work area to be partitioned as far up as the ceiling, our workshop partitioning is the answer.

The picture shows how two walls with protective windows and sliding doors form a new room in a workshop.



High-quality protective welding equipment – excellent training conditions

The existing workshop layout was outdated. Thus, TEUTLOFF-Schulung und Schweißtechnische Bildung gGmbH decided to reconstruct the existing hall. Thanks in part to clean air technology and protective welding equipment from KEMPER, one of the most modern DVS training centres in the region was created in the Calbe industrial park near Schönebeck in Saxony-Anhalt.

From the concept and system planning to assembly, KEMPER implemented comprehensive protective welding equipment and safety measures for the renovation of the hall. Thanks to an intelligent workshop structure, after the reorganisation there was room in the hall for 36 workstations instead of 20. To protect the environment around the welding stations from flying sparks and noise emissions, KEMPER integrated one welding booth per unit with special noise protection walls. Darkened and movable welding strip curtains protect the entrance of the booths.

Best view into the working area

Another advantage: All welding booths are equipped with a darkened viewing window. This allows welding instructors to look through the window directly into the arc while avoiding the risk of electro-ophthalmia. The integrated welding tables have a steel plate support with fireclay panels for flat welding and a bar iron grate for deep welding. A forced position welding fixture is integrated in all tables.

As well as the welding booths, the modernised training centre has six grinding booths consisting of soundproof walls with sliding transparent lamella curtains. Behind each of them is a grinding table

suitable for industrial use. The side walls are fitted with sound insulation material.

A ducting system connects all workstations to the central WeldFil filter system. For space reasons, this is located outside the hall in a weather-protected design and extracts welding fumes and dust particles with a maximum air volume flow of 54,000 cubic metres per hour. No matter whether work is carried out at one or more workstations: The automatic volume flow regulation ensures a consistently high extraction capacity depending on demand.

Air pollution control and energy efficiency at a high level

WeldFil separates ultra-fine dust particles from the contaminated air. These particles are extracted, in turn, at the workstations by high-quality source extraction systems: 25 flexible extraction arms with ergonomic extraction hoods at the welding stations as well as five grinding tables and five cutting tables each with integrated extraction.

The recirculation of the cleaned, pre-heated air also makes KEMPER's protective welding equipment concept in the DVS training centre in Calbe an optimum training location from an energy point of view. Thanks to W3 certification, this is even possible when processing high-alloy steel. Conclusion by TEUTLOFF: In the DVS training centre, the quality of the training and further education has improved to a great extent.



Sound insulating partitioning wall systems



Can be combined as required for various applications

The KEMPER sound insulating partitioning wall system can be built into any design combination due to different modular elements.

The modular elements consist of perforated plates, which are finished with UV-ray absorbent powder coating. Each element consists of perforated plates and a filling of compressed mineral wool according to DIN 4102, which is also finished with UV-ray absorbent powder coating.

Out of these components it is easy to construct complete welding bays, in which exhaust arms could be mounted.

The outside facing columns can be fitted with different mounting devices for curtains, welding strips, etc.



Grinding booth with roof



Art. No. 95 001 112

Art. No. 95 001 114

Art. No. 95 001 113

Properties

- Enclosed grinding booth with folding door, window and roof
- Soundproof elements from laminated mineral wool, 1 x 50 mm thick, exterior full metal, interior perforated metal
- Solid bolted construction made of sheet metal with powder coating
- Window, glass pane clear, 860 x 860 mm
- Folding door, 2,025 x 920 mm

Order Data

Art. No.	Dimensions (w x h x t)	Colour
95 001 112	2200 x 2200 x 2668 mm	grey, RAL 7040
95 001 114	2200 x 3270 x 2668 mm	grey, RAL 7040
95 001 113	3270 x 3270 x 2668 mm	grey, RAL 7040

further sizes available on enquiry/request

Further Products

Art. No.	Description
70 212 100	Cut to measured sizes (+ 10 % to cover wastages)
70 830 27	Rigid screen, red shade 3, UV protection, 1,250 x 2,050 mm, thickness: 3 mm
70 830 28	Rigid screen S9, dark green shade 6, UV protection, 1,250 x 2,050 mm, thickness: 3 mm

Mobile soundproof wall



Applications

- Protection against noise pollution from neighbouring workstations
- Protection against dangerous radiation from welding arcs and splashes

Properties

- Soundproof elements from laminated mineral wool, 2 x 50 mm thick with perforated metal cover and inserted solid metal sheet
- Solid bolted construction made of sheet metal with powder coating
- 4 lockable castors, diameter 125 mm for easy movement
- Minimal ground clearance for optimum sound insulation

Order Data

Art. No.	Description	Wall thickness	Ground Clearance	Weight
99 880 2874	(W x D x H): 1,520 x 800 x 2,110 mm	100 mm	90 mm	154.5 kg
99 880 2756	(W x D x H): 2,020 x 800 x 2,110 mm	100 mm	90 mm	174 kg

Attachment soundproof wall



Benefits

- Further noise reduction from neighboring workstations
- Better protection against dangerous radiation from welding arcs and splashes

Properties

- Soundproof elements from laminated mineral wool, 1 x 50 mm thick with perforated metal cover
- Solid bolted construction made of sheet metal with powder coating

Order Data

Art. No.	Description	Depth of wall with attachment	Height of wall with attachment	Wall thickness	Weight
99 880 2883	(W x D): 1,520 x 500 mm	970 mm	2470 mm	50 mm	41 kg
99 880 2746	(W x D): 2,020 x 500 mm	970 mm	2470 mm	50 mm	53 kg

Welding protective blankets



Properties

- Made from uncoated glass fibre material
- Resistant up to 550° C, briefly up to 750° C

Order details (up to 750°C)

Art. No.	Description
70 150 100	1,000 x 1,000 mm, 0.75 mm thickness
70 150 110	2,000 x 1,000 mm, 0.75 mm thickness
70 150 120	2,000 x 2,000 mm, 0.75 mm thickness
70 150 130	3,000 x 2,000 mm, 0.75 mm thickness



Properties

- Made from vermiculite coated fiberglass
- Resistant up to 750° C, briefly up to 950° C

Order details (up to 950°C)

Art. No.	Description
70 155 100	1000 x 1000 mm, 1 mm thickness
70 155 110	2.000 x 1.000 mm, 1 mm thickness
70 155 120	2.000 x 2.000 mm, 1 mm thickness
70 155 130	3.000 x 2.000 mm, 1 mm thickness



Properties

- Made from uncoated silicon dioxide
- Resistant up to 1100 °C, briefly up to 1,350° C

Order details (up to 1,350°C)

Art. No.	Description
70 160 100	1,000 x 920 mm, 0.7 mm thickness
70 160 110	2,000 x 920 mm, 0.7 mm thickness
70 160 120	2,000 x 1,800 mm, 0.7 mm thickness
70 160 130	H 3,000 x W 1,800 mm, 0.7 mm thickness

Protective welding equipment creates clear structures



of welding fumes and grinding dust particles. To reduce the health hazards, Voith GmbH awarded the contract for the most holistic occupational safety concept from KEMPER.

Work areas divided by function

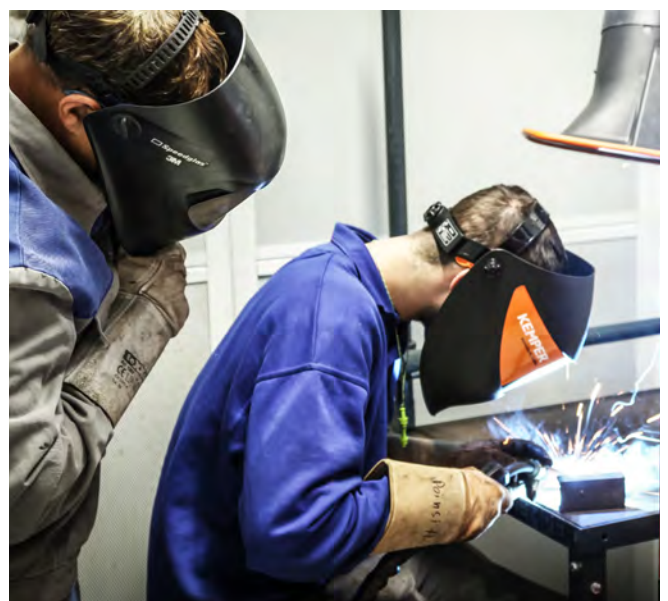
KEMPER created a clear organisational structure within the workshop and divided the workplaces on the ground floor into two areas: One is completely open plan, the other is separated by individual welding booths. In the open area, KEMPER integrated two ten-metre long extraction arms with cantilevers connected to the ducting system. This allows the trainees maximum flexibility in welding, even with larger workpieces.

Separate from this are nine further welding booths, each with a highly flexible extraction arm and a single area for grinding. The welding booths are made of special soundproof walls and have sliding welding protection strips with an individual degree of overlap. Thanks to the darkened protective pane, the instructors are able to look over the shoulders of their apprentices from outside while they work. The grinding workplace with the corresponding extraction system completes the protective welding equipment in organisational terms. Thanks to the folding function of the sound-absorbing side walls, larger workpieces can also be processed in this area.

"Whatever idea we came up with for the area: KEMPER has always delivered the right solution"

Erwin Krajewski
Manager, Voith Training Centre

The challenge in planning the Voith Training Centre in Heidenheim proved to be a tricky one: to keep a three-storey building with a continuous air space free





Voith signals its high esteem for its future specialists with the new concept and the high-quality protective welding equipment.

"With regard to our external image, protective welding equipment is crucial for the recruitment and retention of employees"

Erwin Krajewski
Manager, Voith Training Centre

Moreover, protective welding equipment is one of the most important corporate issues at Voith.

The central link: WeldFil

Although spatially separate, all working areas are connected by a ducting system. If hazardous substances are collected in the separate units, they pass through them to the heart of the extraction system – into the central WeldFil filter system, which is set up away from the workshop and separates even carcinogenic nanoparticles smaller than 0.1 µm in size. Whether one or more detection elements extract the hazardous substances: Automatic volume flow regulation ensures a constant, demand-dependent extraction capacity and leads to considerable savings in energy costs.

"All this technology is a quantum leap for us"

Erwin Krajewski
Manager, Voith Training Centre