

# Fan

 **Non-stop operation**

 **Low noise**



## Applications

- For exhaust arms, telescopic arms and suction hoses
- High levels of smoke and particles
- Non-stop operation

## Properties

- Housing and fan of cast silumin
- Models with 1,000 to 2,200 m<sup>3</sup>/h: connection Ø 160 mm
- Models with 3,000 m<sup>3</sup>/h: connection Ø 250 mm

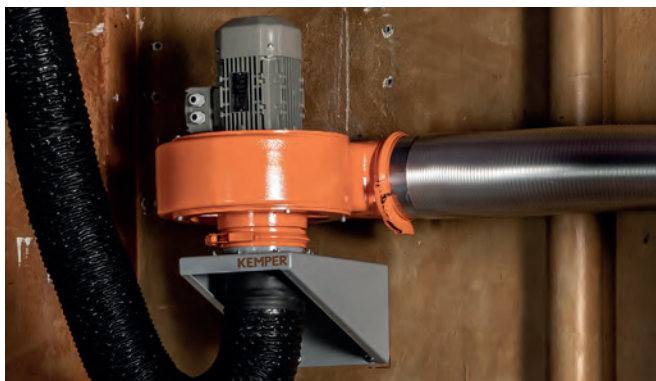
## Order Data - fans up to 2.200 m<sup>3</sup>/h

Art. No.	Description
92 101	Capacity 1,000m <sup>3</sup> /h, 0,55kW-3x400V
92 102	Capacity 1,000m <sup>3</sup> /h, 0,55kW-1x230V
92 103	Capacity 1,000m <sup>3</sup> /h, 0,55kW-3x500V
92 104	Capacity 2,000m <sup>3</sup> /h, 0,75kW-3x400V
92 105	Capacity 2,000m <sup>3</sup> /h · 0,75kW · 1x230V
92 106	Capacity 2,000m <sup>3</sup> /h, 0,75kW-3x500V
92 104 100	Capacity 2,200m <sup>3</sup> /h, 1,1kW-3x400V
92 104 116	Capacity 2,200m <sup>3</sup> /h, 1,1kW-3x500V
92 104 112	Capacity 2,200 m <sup>3</sup> /h - 1,1 kW - 1 x 230 V

## Order Data - fans up to 3000 m<sup>3</sup>/h

Art. No.	Description
92 215	Capacity 3,000m <sup>3</sup> /h, 1,50kW-3x400V
92 215 100	Capacity 3,000m <sup>3</sup> /h, 1,50kW-3x500V
92 215 111	Capacity 3,000m <sup>3</sup> /h, 1,50kW-1x230V

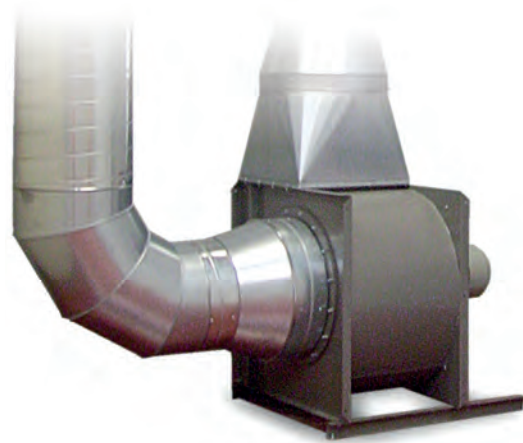
Motor protection switches see accessories



# Central fan

 **Non-stop operation**

 **Without air filter**



## Applications

- For extraction tables, extraction hoods and extraction arms
- High levels of smoke and particles
- Non-stop operation

## Properties

- Galvanised steel sheet construction
- Different performance classes

## Benefits

- Low investment costs because extraction takes place without air filtration

## Variants

- Different performance classes

## Technical Data

### Basic data

Power supply	3 x 400 V / 50 Hz
--------------	-------------------

## Order Data

Art. No.	Description
<b>921 0360 130</b>	KDCF 355-2, 2,2 KW / 2,000 - 4,000 m <sup>3</sup> /h
<b>921 0480 140</b>	KDCF 355-2, 3,0 KW / 3,000 - 5,000 m <sup>3</sup> /h
<b>921 0510 170</b>	KDCF 400-2, 4,0 KW / 4,000 - 7,000 m <sup>3</sup> /h
<b>921 0700 170</b>	KDCF 400-2, 5,5 KW / 6,000 - 9,000 m <sup>3</sup> /h
<b>921 0750 230</b>	KDCF 400-2, 11,0 KW / 6,000 - 10,000 m <sup>3</sup> /h

\*Suitable accessories available upon request

# Exhaust Fan

 **Non-stop operation**

 **For ventilation and extraction**



## Applications

- High levels of smoke and particles
- Non-stop operation
- For ventilation and extraction

## Properties

- Housing and fan of cast silumin
- Portable and mobile
- 2,000m<sup>3</sup>/h version: suction hose Ø 100 mm, Ø 150 mm, outgoing air hose Ø 160 mm connectable
- 3,000m<sup>3</sup>/h version: Suction hose Ø250mm connectable

## Benefits

- High flexibility since blower can be used both for ventilation and extraction
- Very quiet and spark-proof due to cast silumin housing
- Suitable for use on construction sites due to robust manufacture

## Technical Data

### Additional information

Fan type	Radial fan
----------	------------

## Order Data

Art. No.	Extraction capacity	Maximum vacuum	Dimensions (w x h x t)	Power supply	Motor power
91 623	2000 m <sup>3</sup> /h	1350 Pa	600 x 600 x 750 mm	3 x 400 V / 50 Hz	0,75 kW
91 623 100	2000 m <sup>3</sup> /h	1350 Pa	600 x 600 x 750 mm	1 x 230 V / 50 Hz	0.75 kW
91 618	3000 m <sup>3</sup> /h	1950 Pa	600 x 790 x 750 mm	3 x 400 V / 50 Hz	1,5 kW
91 618 100	3000 m <sup>3</sup> /h	1950 Pa	600 x 790 x 750 mm	1 x 230 V / 50 Hz	1,5 kW

## Further Products

Art. No.	Description
93 082	Exhaust hose Ø 100 mm, length 6,0 m, incl. exhaust hood with magnetic foot
93 083	Exhaust hose Ø 150 mm, length 6,0 m, incl. exhaust hood with magnetic foot
79 103 31	Exhaust hood with magnetic foot, including exhaust hose, Ø 150 mm, length 6.0 m
93 087	Exhaust hose, Ø 250 mm, length 6,0 m, incl. exhaust hood with magnetic foot
93 087 100	Exhaust hose Ø 250 mm, length 10,0 m, incl. exhaust hood with magnetic foot
93 084	Outgoing air hose, Ø 160 mm, length 6.0 m
93 088	Outgoing air hose Ø 250 mm, length 6,0 m