



Made *in* Finland

X8 MIG Welder

Extreme Industrial Multi-Process Welding Redefined



Redefine Industrial Welding

With its new technology, X8 MIG Welder will give you extremely precise control of the arc and a welding performance that was previously unattainable.

Take the next logical step and unleash the power of connectivity.







Why there's nothing quite like the X8 MIG Welder

Made *in* Finland

- The X8 MIG Welder is more than just multi-process, multi-voltage MIG welding equipment. It has number of features that raise it above its peers in terms of **welding performance, user experience and welding management.**

"With its sharply focused and intense arc, groundbreaking usability, upgradeable power source, digital WPS and full integration into the WeldEye management system, the X8 MIG Welder allows you to perform, control and manage welding production in a way that was not previously possible."



The system at a glance



1. X8 Power Source 400/500/600 multi-voltage
2. X8 Wire Feeder
3. X8 MIG Guns -w/-g
4. X8 Cooler
5. Control Pad with digital WPS*
6. Interconnection Cables –w/-g
7. Wheel Sets (incl. X8 Gas Cylinder Cart)
8. My Fleet web application
9. WeldEye modules*
10. Wise welding software products
11. Several accessories

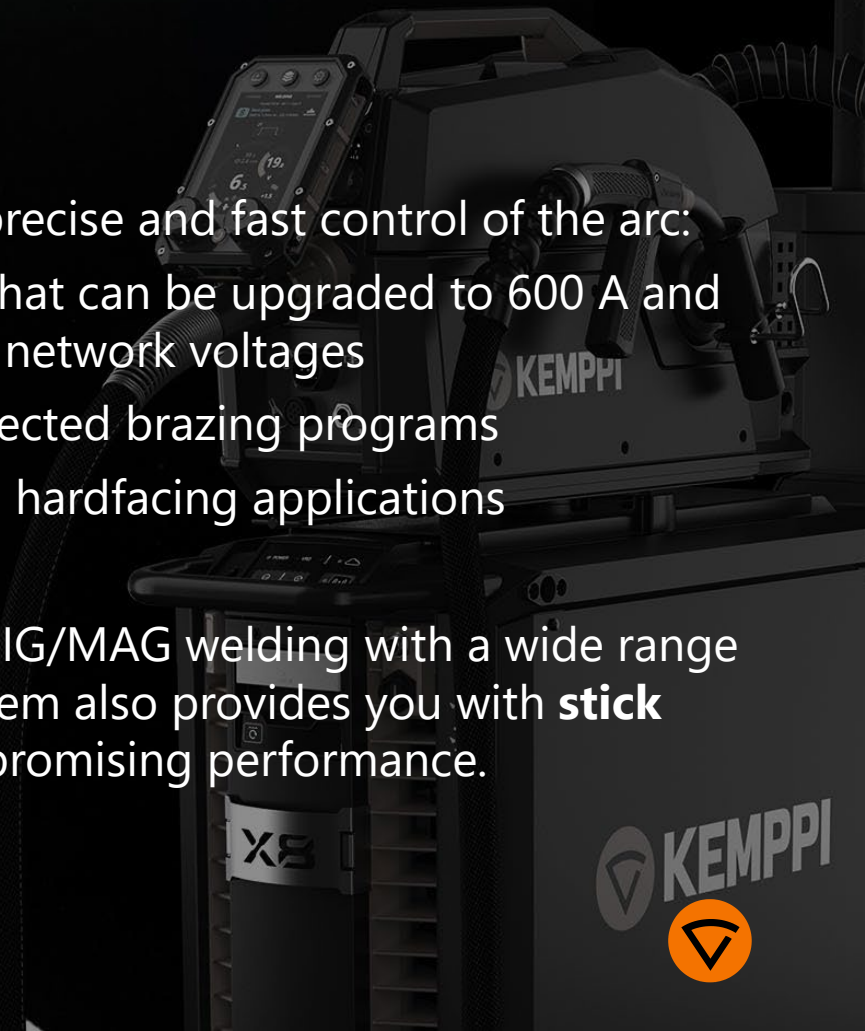
* To enable the use of the digital WPS feature, the customer needs to have a license for the WeldEye WP/PQ module.

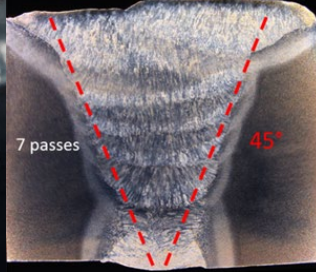


Redefine Performance

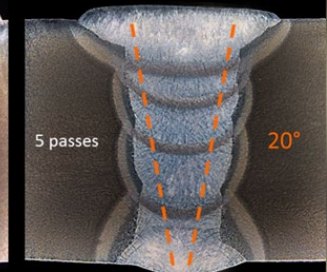
The X8 MIG Welder gives you an extremely precise and fast control of the arc:

- A precisely controllable welding current that can be upgraded to 600 A and runs on the most common power supply network voltages
- Advanced **MIG brazing** with carefully selected brazing programs
- Optimal **cladding** performance including hardfacing applications
- Heavy-duty **gouging** performance
- In addition to standard and pulsed-arc MIG/MAG welding with a wide range of Wise processes and functions, the system also provides you with **stick (MMA) welding** capability without compromising performance.





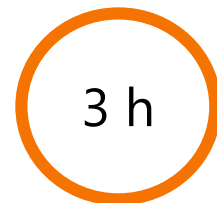
Traditional way



With Reduced Gap Technology

Previously unattainable performance

- Optimized arc characteristics make welding easy and efficient no matter the material.
- Best arc characteristics for high speed and aluminum (WiseFusion), narrow gap (RGT), root pass (WiseRoot+), thin sheet (WiseThin+) and low spatter welding in globular transfer mode (WiseSteel).
- The WiseSteel function not only tackles challenges relating to globular transfer but also constricts the arc and improves its stability increasing travel speed up to 30% on spray arc.
- DProcess is a free-of-charge functionality that extends the use of Wise processes. By combining two free-choice processes, it enables optimal arc characteristics for an even wider range of MIG welding applications.



TRIAL TIME

Test the Wise processes before purchase



Redefine usability

Every aspect designed and engineered to the best usability practices

- 30% faster setup configuration compared to standard MIG welding equipment
- Users can quickly and easily change the system and welding settings, adjust and control the welding values and view WPS content
- Innovatively designed wire feeder ensures the safe and ergonomic loading of filler wire spool
- Well-balanced welding guns with ergonomic handle design make welding more comfortable and productive





Every aspect designed with usability in mind

WELDING GUNS

Welder's most important tool with optimized hand grip, mobility and stability. The ergonomic design guarantees a perfect touch on the trigger and reduces torque on the wrist.

POWER SOURCE

Serviceable power source with carefully designed details. The coolant is easy to fill in, if the indicator panel's coolant level warning LED is yellow.

CONTROL PAD

Tough and robust Control Pad enables adjustment of welding parameters also from a distance. The large and bright display has been designed to be used with welding gloves on.



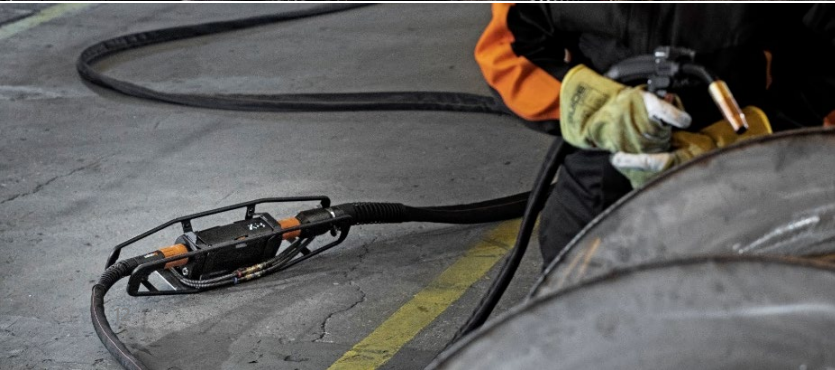


WIRE FEEDER

Innovatively designed wire feeder ensures safe and ergonomic loading of filler wire spool. The wire feeder lighting enables working in dimly lit conditions.

Kinetic spool brake keeps the wire feed steady when tacking or welding with double pulse and/or high wire feed speed, and prevents the wire from loosening.





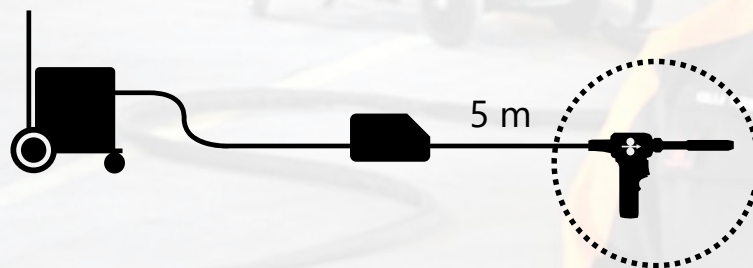
Extreme extension

The X8 SuperSnake subfeeder combines the outstanding benefits of the original SuperSnake with the X8 MIG Welder's modern technology and precise arc control.

- Extends regular reach with up to 25 meters
- Parameter adjustment with the Control Pad or X8 Gun Remote Control
- Supports all Kemppi Wise special processes
- Strong protective frame included as standard



Standard push-pull
MIG welding gun



X8 SuperSnake +
X8 MIG Gun



Powerful precision

- X8 MIG Guns' innovative neck design and structure enable precise wire line operation, a stable shield gas flow and better cooling
- Excellent arc ignition with Touch Sense Ignition
- High quality consumables that are easy to fit and maintain
- Detachable pistol grip handle and an integrated LED work light



Redefine welding management

- Connecting the X8 MIG Welder to the WeldEye cloud service allows for the use of Kemppi's unique management tools both for welding work and documentation.
- The smart digital WPS feature renders printed WPSs unnecessary and ensures 100% correct welding parameters by setting welding parameters automatically based on the activated WPS.
- In addition, the Control Pad serves as a reader device that can be used to collect fabrication information for project documentation and to ensure that welding is performed according to the WPS.



DASHBOARD
PROCEDURES

CREATE NEW

Welding
ISO WPQR
ISO pWPS (Pulsed)
ISO WPQR
ISO WPQR (Pulsed)
ISO WPS
ISO WPS (Pulsed)
WI
WPT

BACK SAVE SAVE

WELDING PROCEDUR

Revise Delete Delete all

Availability: Public

Project: L5-AE3

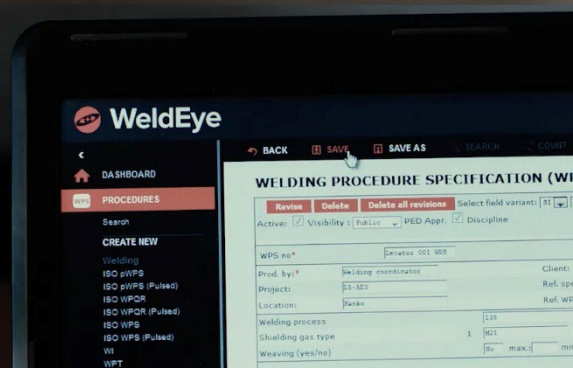
Location: Hanko

Welding process

Shielding gas type

Weaving (yes/no)





Welding management redefined

CONTROL PAD

Unique wireless Control Pad is digital WPS ready and has a crisp display for total control and connectivity. Serves as a reader device. Can be used to collect fabrication information for project documentation.

DIGITAL WPS

Digital WPS renders printed Welding Procedure Specifications unnecessary and guarantees that the welder has always the latest revision of the WPS at hand.

WELDEYE WELDING MANAGEMENT SOFTWARE

Native connectivity to WeldEye software modules Welding Procedure and Qualification Management, Welding Quality Management, and Welding Production Analysis



My Fleet – easy-to-use web application

- Provides first year manufacturer's validation certificate according to EN 50504 for X8 Power Source and X8 Wire Feeder
- Displays the software (firmware and welding software) installed in the equipment
- Welding time calendar presents the usage of the equipment when connected to the Internet
- Free-of-charge service
- Sign in to My Fleet from the MyKemppi website

The screenshot displays the 'MY FLEET' web application interface. At the top, the user is logged in as 'Petteri Jernström' from 'Kemppi Welding Services'. A search bar is visible, and a list of 11 welding systems is shown. One system, 'X8 2489838' (Buster pilot), is highlighted. A detailed 'VALIDATION CERTIFICATE' for 'KEMPPI OY' is overlaid, showing the following information:

Validation authority:
Author: Kemppi Oy
Address: Kempinkatu 1

Welding equipment info:
Manufacturer: Kemppi
Model: X8 POWER SOURCE
Product number: X8100500000
Serial number: 2489984
Test station info: Station: 200058

Validation info:
Validation date: 19.12.2016
Expiration date: 19.12.2017
Grade of validation: Standard
Validation type: Accuracy
Supply voltage: 398
Temperature: (23±5) °C
Method of validation: Automatic mode

VALIDATION RESULTS:

VOLTAGE (V)						CURRENT (A)					
Set	MIN	PT	Measured (V)	MAX	Result	Set	MIN	PT	Measured (A)	MAX	Result
15.0	14.5	15.1	15.1	15.5	✓	14.7	15.0	15.0	15.0	15.6	✓
21.0	20.8	21.5	21.4	21.4	✓	20.6	21.0	21.0	21.0	22.3	✓
27.0	26.5	27.2	27.2	27.6	✓	26.7	27.0	27.0	27.0	27.8	✓
33.0	32.0	33.3	33.3	34.0	✓	32.6	33.0	33.0	33.0	34.0	✓
39.0	38.5	39.1	39.1	40.0	✓	38.3	39.0	39.0	39.0	39.9	✓

Power on 13 h Device start count 46 Welding time 0 h 19 min 3 s Updated 13.01.2017 13:03:46

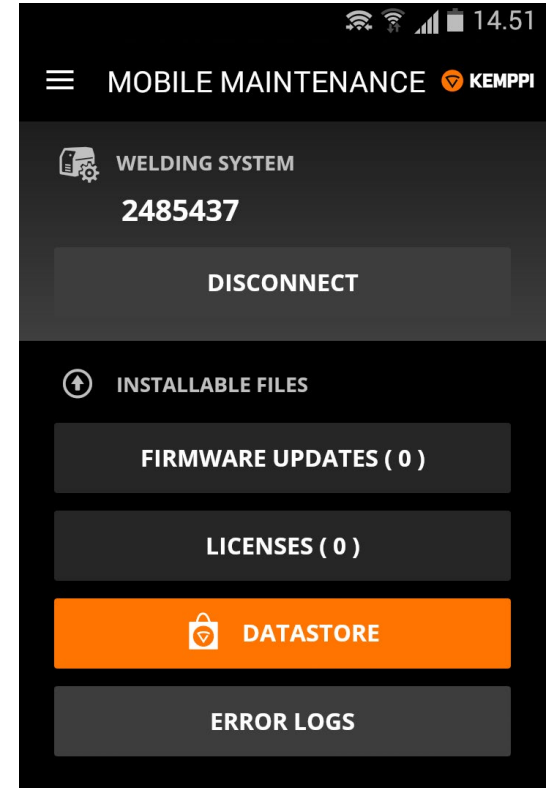
The bottom section shows a grid of equipment components and their software versions:

- WIRE FEEDER:** 2491427, SW v0.92.02.0, CERTIFICATE
- CONTROL PAD:** 2489202, SW v0.92.09.0
- POWER SOURCE:** 2493984, SW v0.92.05.0, CERTIFICATE
- CONNECTIVITY CARD:** SW v0.92.09.0
- SOFTWARES:** Features 8, Curves 11

A Kemppi logo is visible in the bottom right corner.

Mobile Maintenance

- Android mobile app to perform X8 MIG Welder updates
 - Software updates
 - License updates
 - Welding program updates
 - Backups
- Requires DataStore access
 - Purchase and download updates from DataStore



And you know.

